

COUNTRY COACH *DESTINATIONS*[®]

Oregon Enjoys Sunshine & Warmth
Summer 2011



 COUNTRY COACH CORPORATION

“What we have to offer you.”

Message from Ron

Welcome to the Summer edition of Country Coach Destinations. We look forward to publishing this newsletter on a regular schedule to keep you up on the latest happenings at Country Coach.

Who are we?

- Country Coach Corporation, doing business as Country Coach.
- www.countrycoach.com
- Located at: 135 E. First Ave, P.O. Box 575, Junction City, Oregon 97448
- Corporate phone: (541) 234-2167
- Corporate fax: (541) 234-2189
- Country Coach Corporation started operations on January 3, 2011.
- Ownership: Wholly owned by Ron Lee. Ron is a former owner of Country Coach, Inc until it was purchased by National RV in 1995.
- At the liquidation auction of Country Coach LLC, on February 4, 2010, Ron purchased the intellectual property and selected pieces of equipment.

Who we are not:

- Country Coach LLC.
- Premier RV of Junction City, is not Country Coach.

Services we offer:

- Motorhome and chassis service up to and including a complete rebuild.
- Parts sales including exclusive OEM Factory Parts.
- **10% Parts Discount for all Country Coach Owners.**
- Consignment Sales of lightly used Country Coaches.
- **Country Coach Logo'd Apparel.**

Have a great Summer and hope to see you soon,

Ron Lee, President & CEO



Let's Tour Today's Country Coach

Chassis Shop



Laser Alignment/ Chassis Pit.

Using laser technology, we can align any brand of coach to its original factory specs.

Our Chassis Service Pit enables ideal access for inspection & repair of the complete chassis undercarriage.



Steering/Suspension. Drawing on their many years of CC Factory Experience, our staff can tackle any service job. Services include Steering, Suspension (shocks/air bags/ride height), Lube/Oil/Filter, Brakes, Over-the-Road Air Conditioning, and Wheel Bearings to name a few.



Cooling. Cooling system diagnosis and repairs including complete radiator replacements.

Chassis A/C. Complete over the road air-conditioning service and repair.



Steel Fabrication

The Steel Fabrication Shop provides items such as parts for our Parts Sales Department as well as subassemblies for items like replacement Slide Out Rooms. We also work on coaches that require frame repairs, repair or replacement storage roll-outs, battery roll-outs, and any type of metal fabricated component. Outside RV Dealers and Service Centers can order exclusive CC OEM Factory parts that are fabricated in our Steel Fab Shop.



Welding. Welding processes include TIG for Aluminum and MIG for Steel.



Cutting. All types and shapes of raw metals are precision cut on our saws and plasma cutter.



Grinding. Weldments are carefully ground for flush fitting assemblies. Components are prepped and painted with a rust resistant coating.



Future. A glimpse into the future; pictured here is a Dynomax® Magna Chassis.

*Copying, Alteration, or any other use of Country Coach® Trademarks without written permission from Country Coach Corporation is prohibited by law.

Fiberglass Fabrication

The intellectual property (IP) includes all of the fiberglass production molds and tooling used to produce your Country Coach. We can manufacture any Country Coach fiberglass part like roofs, bay doors, skirts, front and rear caps, and fender flairs to name a few. These parts are original factory parts made in the very same mold that was originally used to produce your motorhome. If your coach was involved in a collision, we can supply new parts; no reason to total the coach.



Part Fabrication.

The next two steps involve the spray application of the finished gelcoat surface followed by a subsurface application of chopped glass fiber, reinforcement blocking, and isothalic resin. The isothalic resin insures a part that will not deform or have surface blemishes.



Mold Prep. The first step is to prepare the mold for building the new fiberglass part. A mold release wax is hand rubbed across the entire surface of the mold and allowed to cure.

Finished part. This front cap is completely trimmed and ready for shipping. Our IP gives us access to all of the specifications for proper part trimming. For instance, we can cut a perfect windshield installation opening into this front cap.



Crating/Shipping. Here the part is being securely crated for shipping. We can fabricate, crate and ship fiberglass parts to any location inside and outside of the U.S. For inquires on ordering fiberglass parts, call (541) 234-2167 and ask for our Parts Department or email at parts@countrycoach.com.



Sand Master. Our *state-of-the-art* sanding machine is used to create an extremely even and smooth surface.



Face Frame. With parts pneumatically held in place, cabinet sections are assembled perfectly square and flush using our Face Frame Assembly Table. Cabinet sections are fastened together with adhesive and screws.



Shaping. This hardwood board is being machined in a special power shaper for a raised panel door section.

Staining and Finish. We can match any cabinet finish. The first step is hand rubbed stain application that is followed by an application of high gloss finish. Custom finishes are also available such as White Wash, Patina, and Painted Cabinets.

No job is too large or too small; our staff has many years of CC experience and can produce any cabinet and countertop (solid surface).

Our Cabinet Shop combines old world craftsmanship with state of the art technology to produce high quality cabinetry. We have exclusive access to all of the CC Engineering drawings and data that was used to build your coach.





Paint prep. This coach is in one of our environmentally controlled paint booths where masking is being applied prior to application of paint colors.

Paint repair. This coach is having some minor body and paint repair. In addition to minor fiberglass and paint repairs, we offer up to and including full body re-paint jobs.



Paint Application. Paint is being applied to the body. Our process includes color matching, color blends, and special effects like drop shadows and chameleon color change paints. Following color application, a final clear coat is applied and baked at high temperature for proper catalyzing.



Paper masking. This picture shows a completely prepped coach that includes scuffing of surfaces to be painted, masking tape applied, and protective paper mask over areas not receiving paint.

Service Shop

Slide Room.

Complete slide out room repair & replacement.



Remodels.

Complete remodels are available as well as minor repairs. Here we see interior cabinets being installed.



Complete Coach

Service. A refrigerator is removed as part of an interior remodel. Our Coach Service Shop offers:

- Slide Room R&R
- Windshield Replacements
- Furnace R&R
- Air Conditioner R&R
- Generator R&R
- Electronics diagnostics
- Electronics upgrades
- Overhead Dash TV upgrades that include design and constructing a completely new Dash Overhead.
- Fiberglass repairs to exterior body up to and including complete part replacement (roofs, front cap, rear cap, bay doors, skirts, etc).
- Tile repairs and upgrades including complete tile replacements.
- With our exclusive access to all of the engineering drawings and data, we can repair your coach to original factory condition.



Windshield. Windshield replacement.

Before

After



Tile Floor. Complete Tile replacement.

Electronics. Dash electronics repair.





Indoor Showroom. Here is our indoor showroom of lightly used Country Coaches. For those who seek a pre-owned Country Coach you can be confident that our Consignment Coaches have been inspected by our experienced staff of Country Coach Factory Technicians. For those who wish to sell their coach, you can be confident that our customer exposure through our website, www.countrycoach.com, and daily service customer traffic will give you great market exposure. We offer customers exceptional services such as upgrades and remodels on units they choose to purchase. We will gladly consider any brand of coach for our Consignment Sales Inventory.

Factory Delivery. Customers arrive by helicopter to take a factory delivery of their Country Coach.

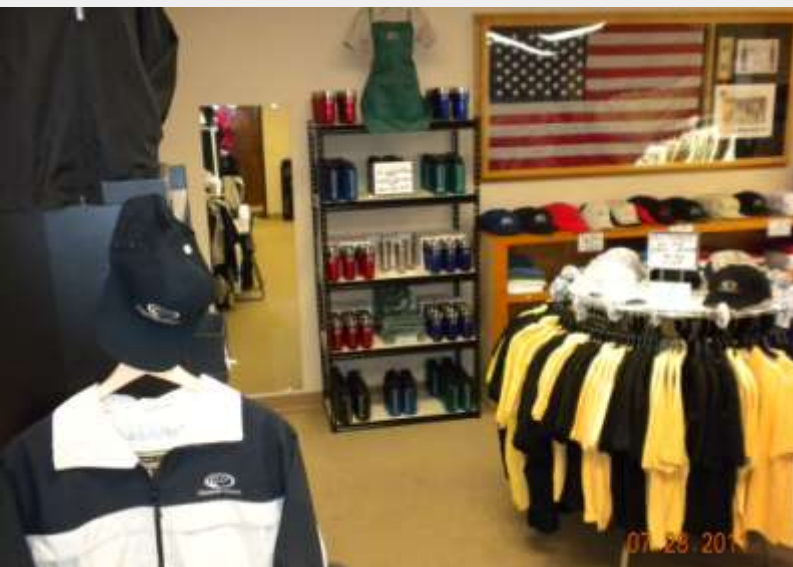


Access to Factory. Our show room has access to the Country Coach Factory for any desired upgrades or remodels.





Country Coach Logo'd Apparel and Collectibles. Available at our website, www.countrycoach.com, or here at the Country Coach Factory in Junction City, Oregon, we have a wide selection of clothing items and collectibles. For shopping over the internet, click this link: http://countrycoachwearables.promoshop.com/featuredproduct/index.aspx?DPSV_Id=543890



Front Desk. Arlene is a busy girl with her tasks of meeting and greeting guests plus keeping up with answering our ever increasing number of incoming phone calls. We ask for your understanding as we grow with the increase in our business and truly appreciate your patience while we process your internet and phone inquiries. Now you can put a face with that gal who answers our corporate phone. Collectively, our staff has over 400 years of Country Coach Factory experience.



Parts Sales. Meet Martine one of our parts sales staff. In the last 12 weeks, we have processed 3,561 parts calls (that's over 59 per day)!



Phone Tech. Meet Gentry one of our technical staff. In the last 12 weeks, we have processed 1,020 Tech calls (that's 17 per day)!

Service Appointments. Meet Jim, our Service Manager. In the last 12 weeks, we have had 256 calls for in-shop service.

Consignment Sales. Meet John, in Coach Sales. In the last 12 weeks, we have had 270 calls regarding our Consignment Coaches.



Why do you need CCC?

IP. IP stands for “*Intellectual Property.*” Having access to the IP brings back value to your coach. The Country Coach IP includes:

- Engineering Drawings
- Coach design Bill of Materials (BOM)
- Coach specifications
- Production Molds for Country Coach Fiberglass Parts (*we saved them*)
- Paint mixing codes for Country Coaches
- Detailed “*As Built*” information about your coach that includes things like carpet style and color, etc
- Country Coach Trademarks:
 - * Country Coach Logo®
 - * Country Coach Destinations®
 - * Country Coach®
 - * Dynamax®
 - * Inspire®
 - * Allure®
 - * Intrigue®
 - * Magna®
 - * Affinity®
 - * Copying, Alteration, or any other use of Country Coach® Trademarks without written permission from Country Coach Corporation is prohibited by law.

Synergy. Why we need you:

- In order for the Country Coach brand name to survive.
- You supply the parts/service business we need to survive.
- We give a 10% Discount on all parts to Country Coach Owners; this is our way of supporting you.
- We encourage membership in Country Coach Clubs as it promotes camaraderie within the Country Coach Family.
- Country Coach Regional Clubs Information:

Country Coach Country Cousins:

Jim Ferguson; Winter Springs, FL 32708
(407) 376-3909; Jfwsfl@earthlink.net;
www.cccountrycousins.com

Country Coach Heartlanders:

Bob Harbrecht; Valparaiso, IN; (219) 510-2419
(219) 462-2608; ruthnbob2@hotmail.com

Country Coach Nor'easters:

Ed Geswell; Hanover, MA; (781) 727-2006
ejgr@verizon.net; www.ccnoreasters.com

Country Coach Texans:

Joe Taylor; McKinney, TX; (214) 460-1084
jntaylor34@earthlink.net; www.cctexans.com

Florida Coast Alongs:

Tim Tyler; lttyler@gmail.com; (727) 744-9900;
4625 E. Bay Dr., Suite 201, Clearwater, FL 33764

Northwest Country Coachers:

Fred Dent; Seattle, WA; (206) 915-9638
President@nwccers.org; www.nwccers.org

Rocky Mountain Country Coachers:

Betty Woods; Scottsdale, AZ; (480) 575-9740 home; (480) 332-6563 cell
betty@cavecreeksoftware.com
www.rmccusa.com

Southeast Country Coachers:

Kenneth Dangelo; Stone Mountain, GA
(404) 394-9074 cell
KDangelo@globalbelting.com or ken@Dangelo.com
www.southeastcountrycoachers.com

Southwest Country Coachers:

Don Courtney; (909) 875-0878
Jim & Joyce Posik; (909) 985-6898 jeposik@msn.com
presdon@swccers.com; www.swccers.com

Country Coach Friends International

Jerry O'Connor; 10942 Garma Ct. SE, Turner, OR 97392
jerryobus@aol.com
www.countrycoachfriendsinternational.com
countrycoachfriendsinternational@yahoo.com